

Conwy and Denbighshire Public Services Board – Environmental Policy Statement

Introduction

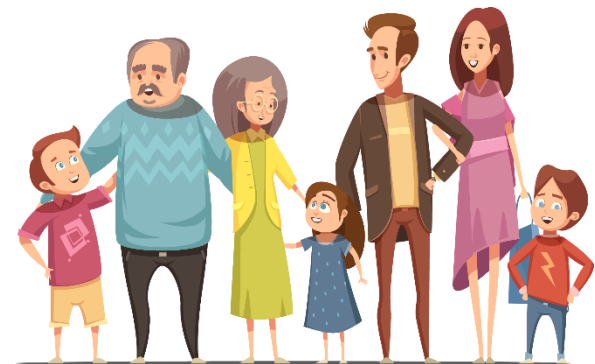
Our Environmental Policy is focused on Climate Change as the defining issue of our time and the greatest threat to our well-being, globally and locally. We need to take drastic action now to reduce our greenhouse gas emissions and to prepare and mitigate for the impacts of global warming, sea level rise and extreme weather events. The Conwy and Denbighshire Public Services Board (PSB) is committed to taking action on Climate Change and has made environmental resilience a priority area of the [Local Well-being Plan](#) for the region. This Policy considers several aspects of environmental resilience including reducing carbon emissions, and working together to mitigate and adapt to Climate Change.

Why this is a priority for us

Climate Change will put pressure on ecosystems, infrastructure and landscape, threaten the well-being of both current and future generations and disproportionately affect the most vulnerable communities. The public sector needs to take the lead by reducing carbon emissions from its own activities and by working together with residents, communities and businesses to play their part in increasing environmental resilience to deal with the impacts of Climate Change.

If we focus on this priority now, in the future we could have

- A net zero carbon public sector by 2030;
- A developing low carbon economy;
- Resilient communities prepared to deal with the impacts of extreme weather events and sea level rise;
- A natural environment with healthy biodiversity and habitats which maximises carbon capture.



Commitment 1

Commitment 1: Carbon and Energy

To reduce our carbon and energy usage, so by 2030 we will be a carbon neutral public sector.

The Environment (Wales) Act 2016 set a target of reducing carbon emissions by at least 80% by 2050 (from their pre-1990 levels). [Welsh Government](#) have set interim emissions targets and the first two carbon budgets to ensure progress is made towards the long-term target.

- Interim Targets:** ➤ **2020:** 27% reduction ➤ **2030:** 45% reduction ➤ **2040:** 67% reduction
- Carbon Budgets:** ➤ **1 (2016-20):** average 23% reduction ➤ **2 (2021-25):** average 33% reduction

Outputs

**Commitment 1:
Carbon & Energy**

Output 1a: Waste

A reduction in the amount of waste generated from our activities, so by 2050 there will be zero waste sent to landfill.

Output 1b: Transport

Sustainable travel is supported and active travel is encouraged within our organisations.

Output 1c: Procurement

A sustainable approach to procurement is supported, leading to a reduction in emissions through our buying of goods, works & services.

Output 1d: Energy Usage

Energy usage in our buildings and estates is reduced.

Key Actions

Comply with all current energy legislation, seeking to meet or better legislative targets.

Measure & monitor our energy usage and carbon emissions and take steps to reduce.

Implement alternative or renewable energy technologies, where practical, to provide additional sustainable energy for our facilities.

Reduce the amount of waste in all our operations and produced from our activities – disposing of it through safe and responsible methods (in accordance with regulations).

Improve the recycling facilities available to our staff and customers / clients/ patients.

Carry out a waste audit of our organisations.

Promote recycling and the use of recycled and refurbished products and materials where such alternatives are economical and suitable, while reducing consumption of materials wherever possible.

Reduce the amount of miles we drive.

Invest in technologies that provide alternatives to business travel.

Install electric vehicle charging and explore options for implementing an electric vehicle fleet.

Promote car sharing in an effort to minimise carbon emissions.

Offer effective schemes (such as ‘cycle to work’ and public transport discounts) to increase sustainable and active travel within our organisations.

Ensure environmental and social commitments are detailed as conditions in contracts and monitor the delivery of these.

All plastic products and packaging procured by the public sector to be reduced or, if unavoidable, reusable, recyclable and with recycled content where technically possible.

Reduce any negative impacts on the environment from the purchasing of goods and services and work with suppliers to ensure they have a similar commitment.

Work with local suppliers and farmers to source local, healthy, sustainable food delivered to work premises.

Key actions to be confirmed.

To be confirmed

Commitment 1 - Detail

Commitment 1	To reduce our carbon and energy usage, so by 2030 we will be a carbon neutral public sector.					
Lead Agency	Natural Resources Wales					
Lead Officer	Clive Walmsley, <i>Principal Climate Change Advisor</i>					
Contact Leads	Betsi Cadwaladr University Health Board	Stephen Phillips, <i>tbc</i>	Community & Voluntary Support Conwy	<i>TBC</i>	Conwy County Borough Council	Amanda Jones, <i>Business Improvement Manager</i>
	Denbighshire County Council	Tom Booty, <i>Energy Manager</i>	Denbighshire Voluntary & Support Council	<i>TBC</i>	National Probation Service	<i>TBC</i>
	North Wales Fire & Rescue Service	<i>TBC</i>	North Wales Police	<i>TBC</i>	Police & Crime Commissioners Office	
	Public Health Wales	<i>TBC</i>	Welsh Government	<i>TBC</i>		
Framework all organisations will commit to implement	Welsh Government's Prosperity for all: a low carbon Wales .					
Good Practice	Natural Resources Wales Carbon Positive Project and the Future Generations Commissioners Decarbonisation priority					
Accountability	Report on progress against commitment 1 will be provided by the lead organisation on an annual basis to the PSB.					

Commitment 2

Commitment 2: Climate Change Adaptation

To prepare for the impacts of climate change, including those that we are seeing now, and those we expect to see in the future.

Outputs

Output 2a: Biodiversity

Our green spaces, coastal areas and woodlands to encourage resilient and healthy ecosystems.

Output 2b: Adverse Weather

The resilience of communities is strengthened to manage the consequences of adverse weather (e.g. flooding, heatwave etc)

Output 2c: Planning

The environmental impacts are considered during the planning and development process.

Output 2d: Water

A sustainable approach to managing our water is supported.

Key Actions

Prepare and publish a plan in line with the biodiversity duty under section 6 in the Environment (Wales) act 2016.

Assess the impacts that all of our operations, functions and duties (direct and indirect) have on biodiversity.

Become a Bee Friendly organisation.

Apply green infrastructure to make our buildings and assets more wildlife friendly.

Conserve and enhance biodiversity and habitats by planting trees and nature friendly plants.

Raise awareness and engage people in the response to flood and coastal erosion risk.

Implement flood risk management plans.

Discouraging inappropriate development in areas at risk from flooding or coastal erosion.

Invest in flood alleviation and coastal defense schemes.

Raise awareness and engage people in the response to flood and coastal erosion risk.

Consider the impact on the environment during the planning and implementation of our growth strategies.

Ensure, where practicable, that buildings occupied by us are designed, constructed and operated to optimise their environmental performance.

Through the planning process, secure significant areas of habitat management agreement as part of public open space provision and biodiversity mitigation.

All of our buildings to meet accredited sustainability standards (such as BREEAM excellence, ISO 14001).

Measure and monitor our water consumption and take steps to reduce.

Increase the number of sites that record meter readings.

Use water efficiently, and sustainably to manage the water environment.

Ensure all landholdings are compliant with environmental legislation, to reduce potential for water pollution issues.

Install water efficient fixtures in buildings and connect water butts to buildings/supply them to communities to conserve and utilise rainwater

Key Measures

To be confirmed

Commitment 2 - Detail

Commitment 2	To prepare for the impacts of climate change, including those that we are seeing now, and those we expect to see in the future.					
Lead Agency	TBC					
Lead Officer	TBC					
Contact Leads	Betsi Cadwaladr University Health Board	<i>TBC</i>	Community & Voluntary Support Conwy	<i>TBC</i>	Conwy County Borough Council	<i>Amanda Jones, Business Improvement Manager</i>
	Denbighshire County Council	<i>TBC</i>	Denbighshire Voluntary & Support Council	<i>TBC</i>	National Probation Service	<i>TBC</i>
	Natural Resources Wales	<i>TBC</i>	North Wales Fire & Rescue Service	<i>TBC</i>	North Wales Police	<i>TBC</i>
	Police & Crime Commissioners Office	<i>TBC</i>	Public Health Wales	<i>TBC</i>	Welsh Government	<i>TBC</i>
Framework all organisations will commit to implement	Climate Change Adaption Plan for Wales (currently out to consultation)					
Good Practice	TBC					
Accountability	Report on progress against commitment 2 will be provided by the lead organisation on an annual basis to the PSB.					